

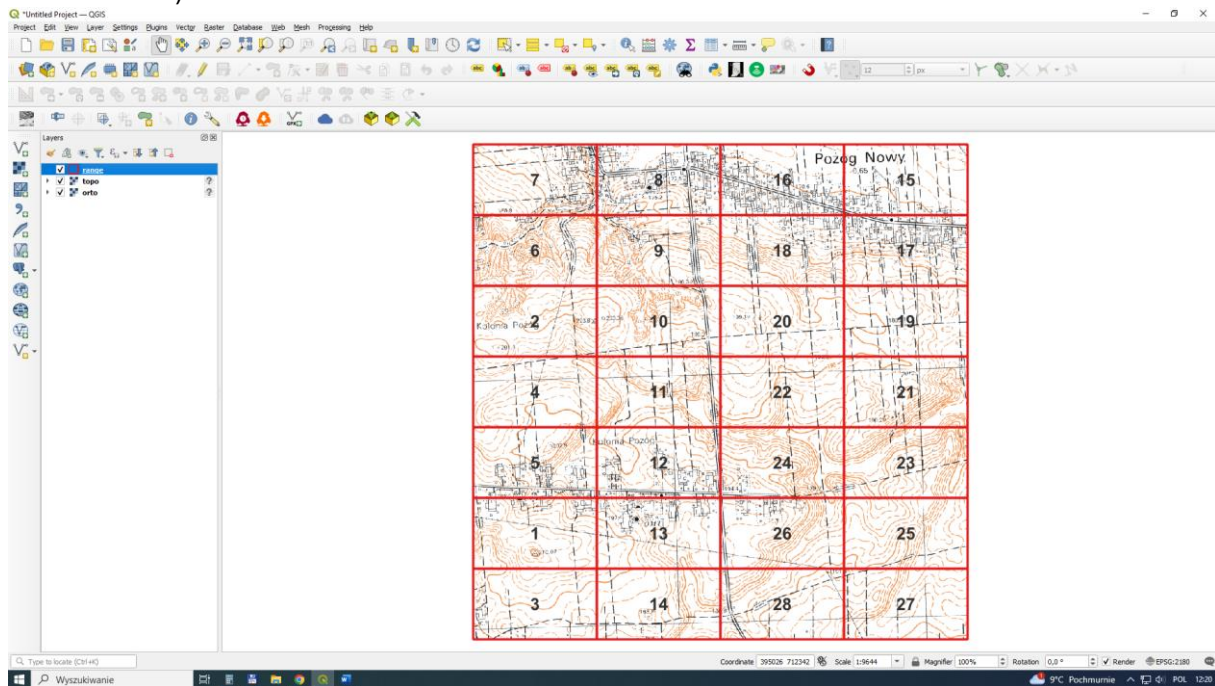
## Exercise 2

Topic: Creating shapefile layers (points, lines, polygons), vectorization, creating and completing the database

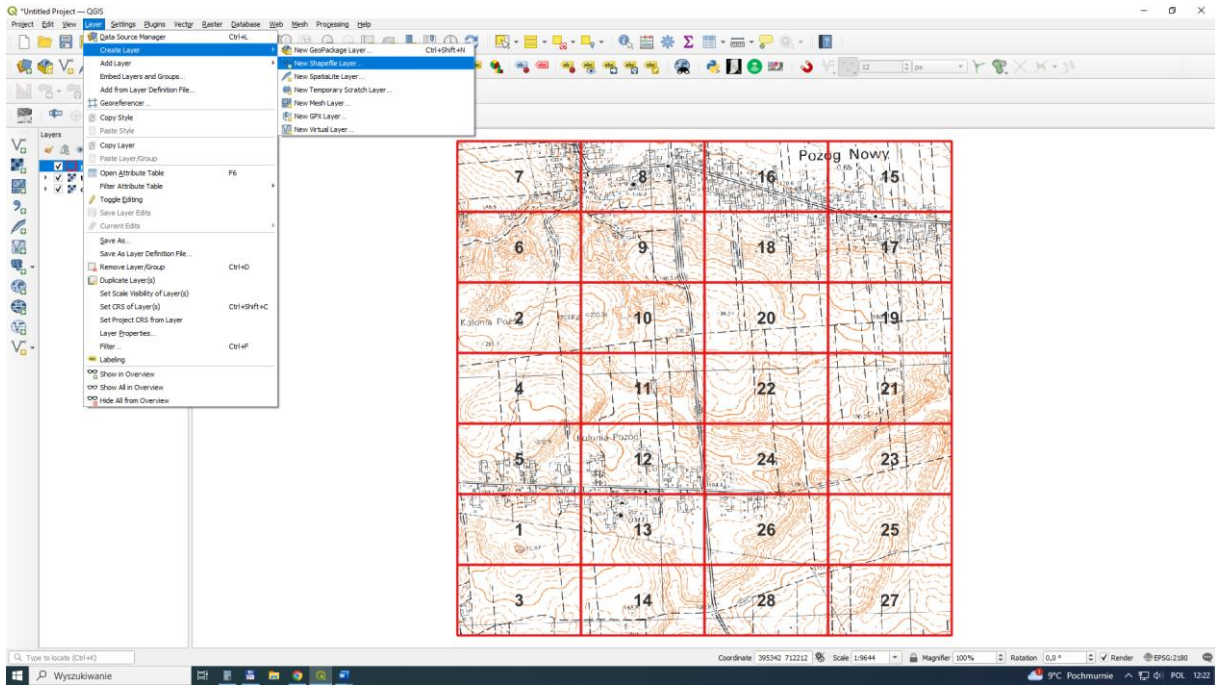
Task: Your task is to draw all points and describe their heights, all lines (types of roads: asphalt road, dirt road; power line) and types of land use (polygons) (meadow, arable field, forest, house). Information about the type of object must be entered into the database. All elements should be drawn at a scale of 1:1000.

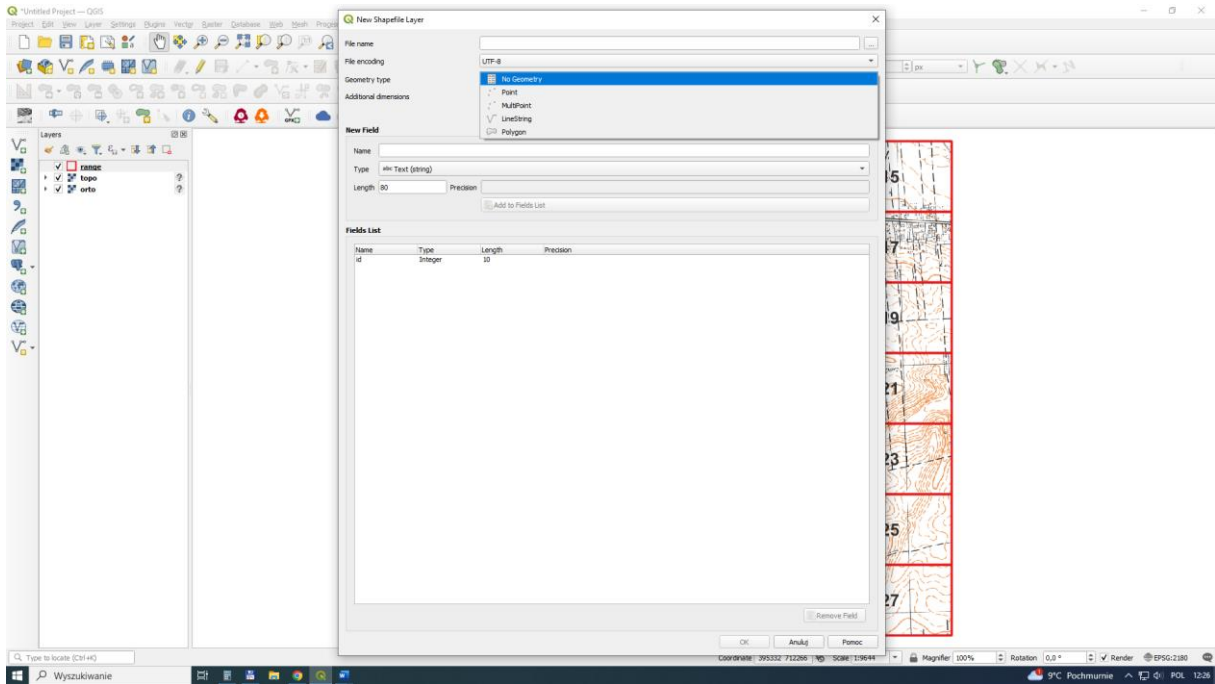
### 1. Creating shapefile layers

Load the uploaded data: topo.jpg (topographic map), orto.jpg (aerial photo), range.shp (range for each student).



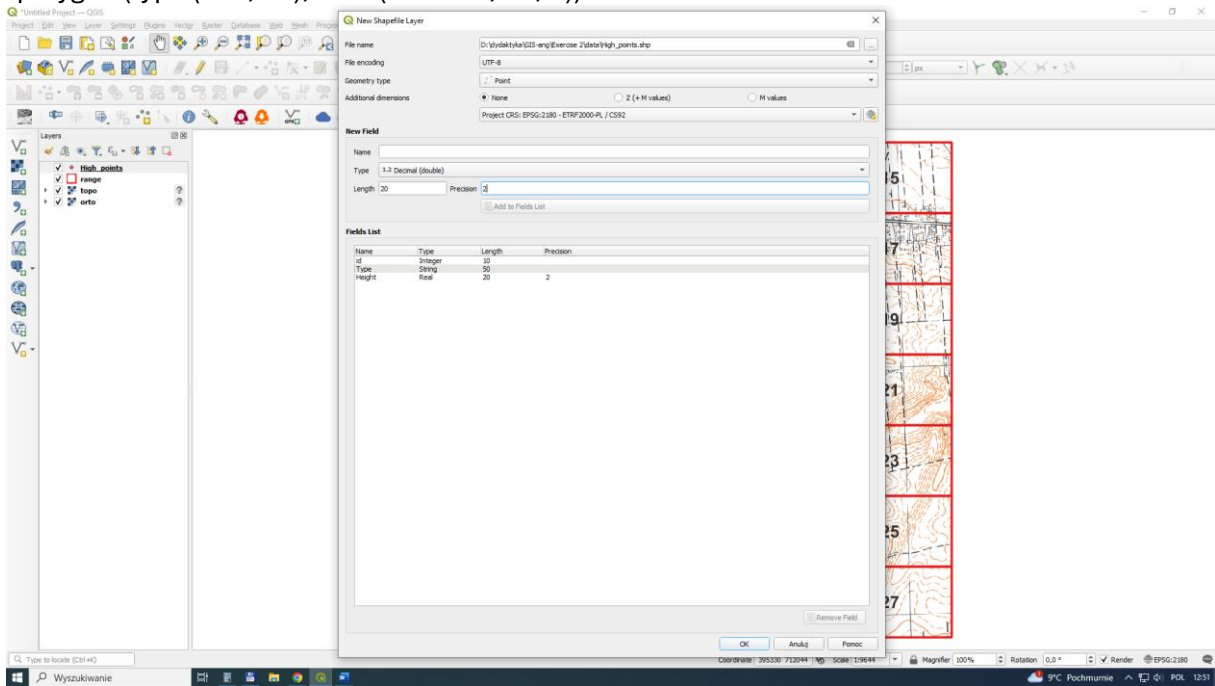
Create New shapefile layer: point (high\_points.shp), lines (lines.shp), polygon (landuse.shp)

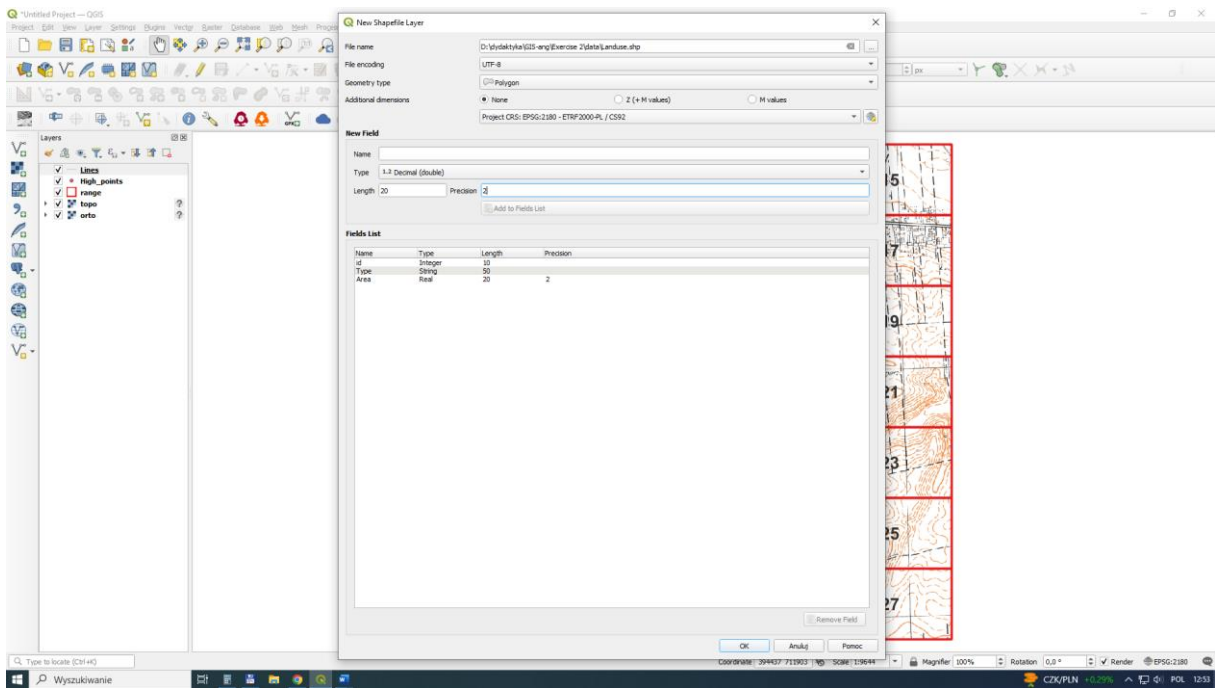
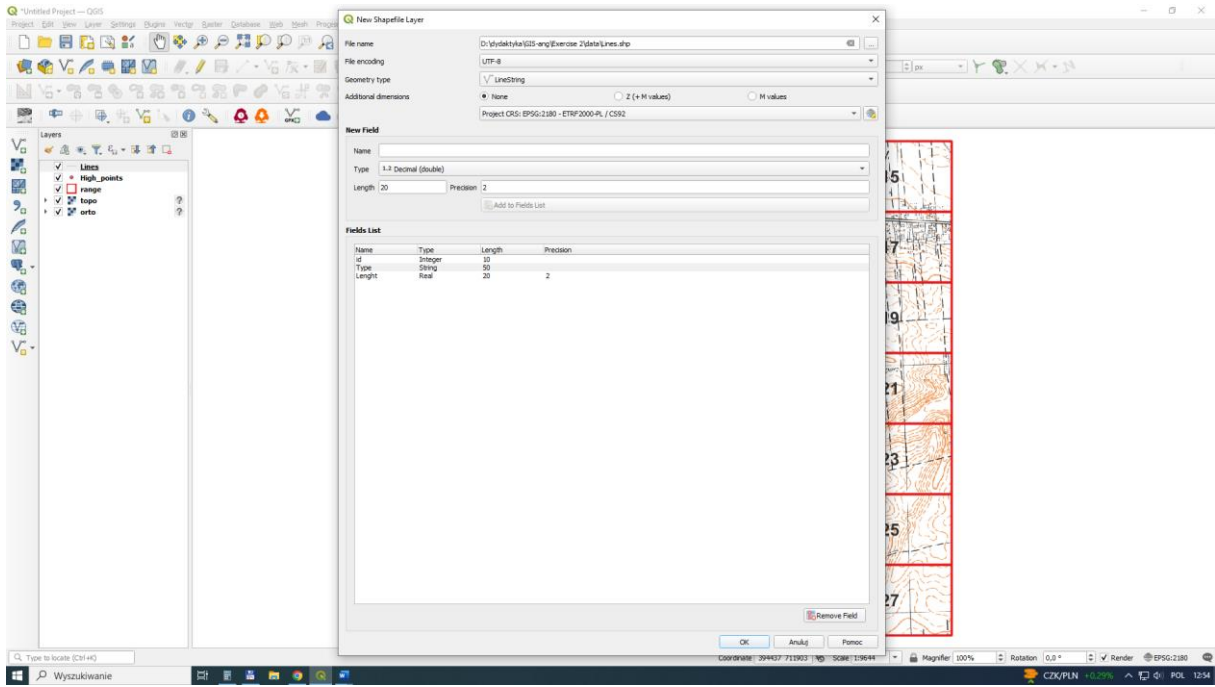




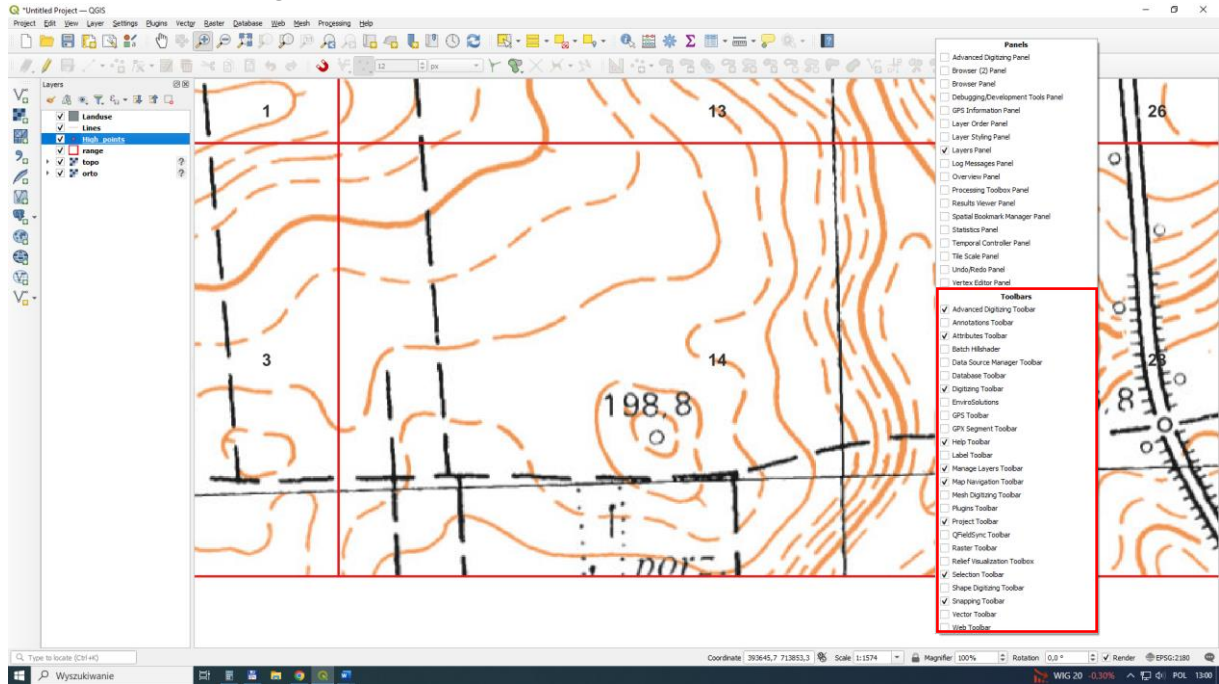
Add columns in database for each layer:

- points (type (text; 50), height (decimal; 20, 2));
- line (type (text; 50), length (decimal; 20, 2));
- polygon (type (text; 50), area (decimal; 20, 2)).

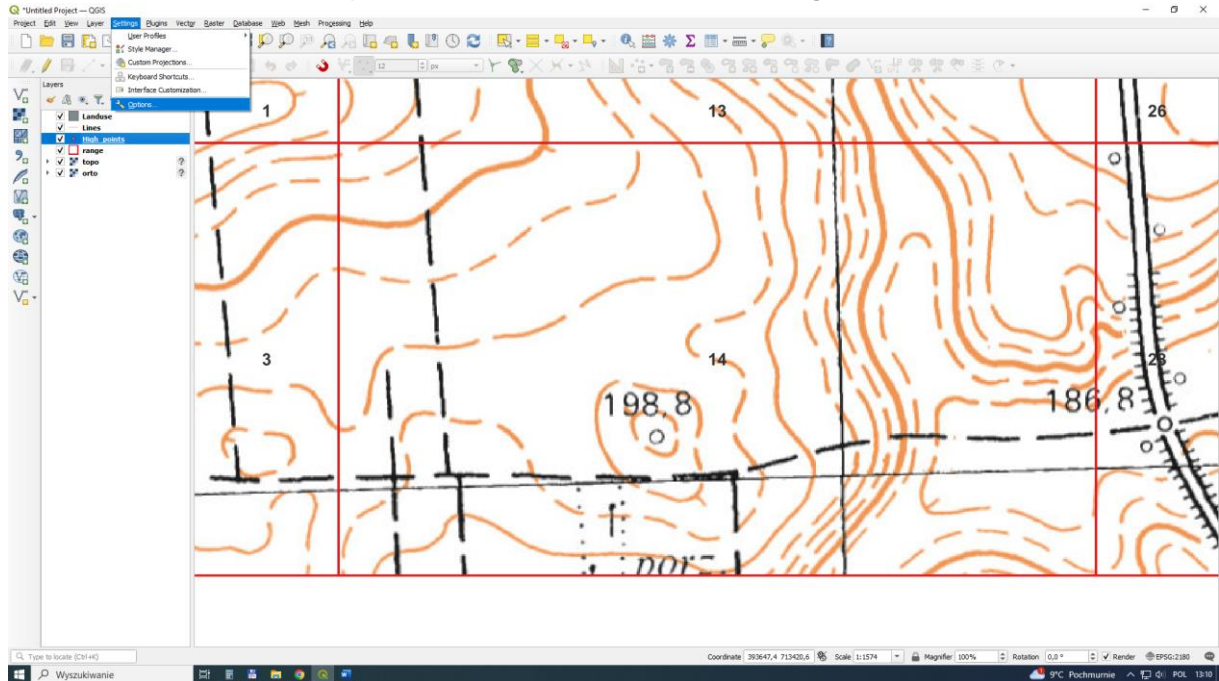


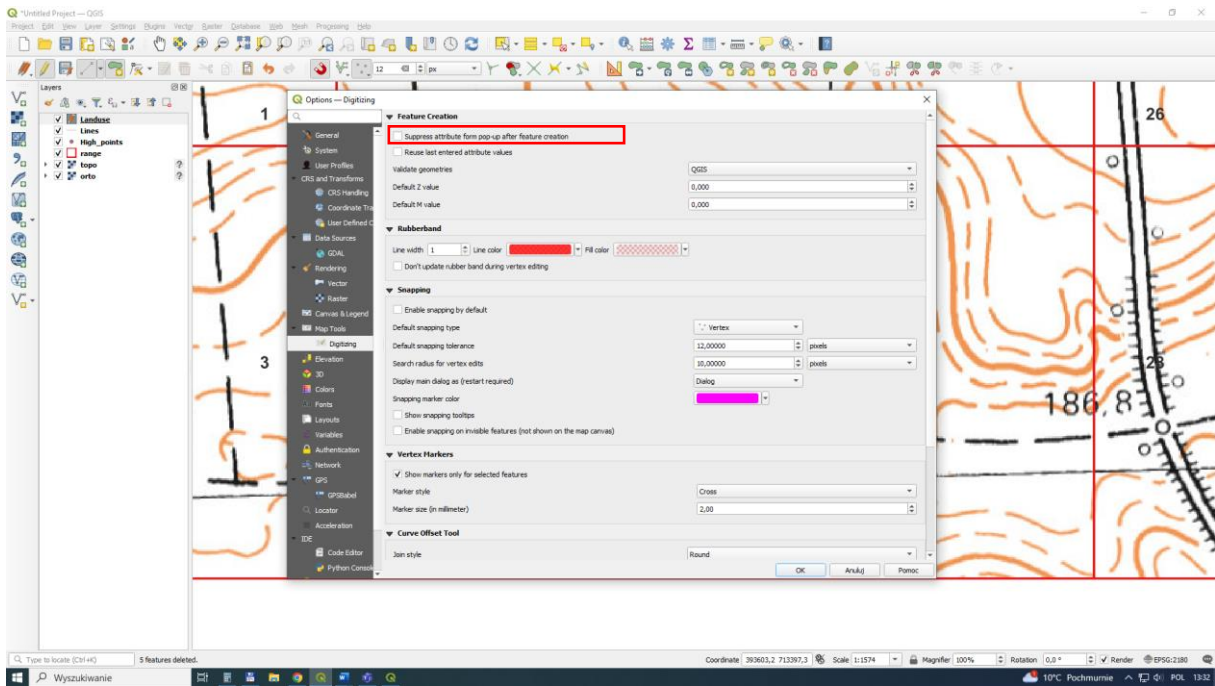


## View tools for data digitization

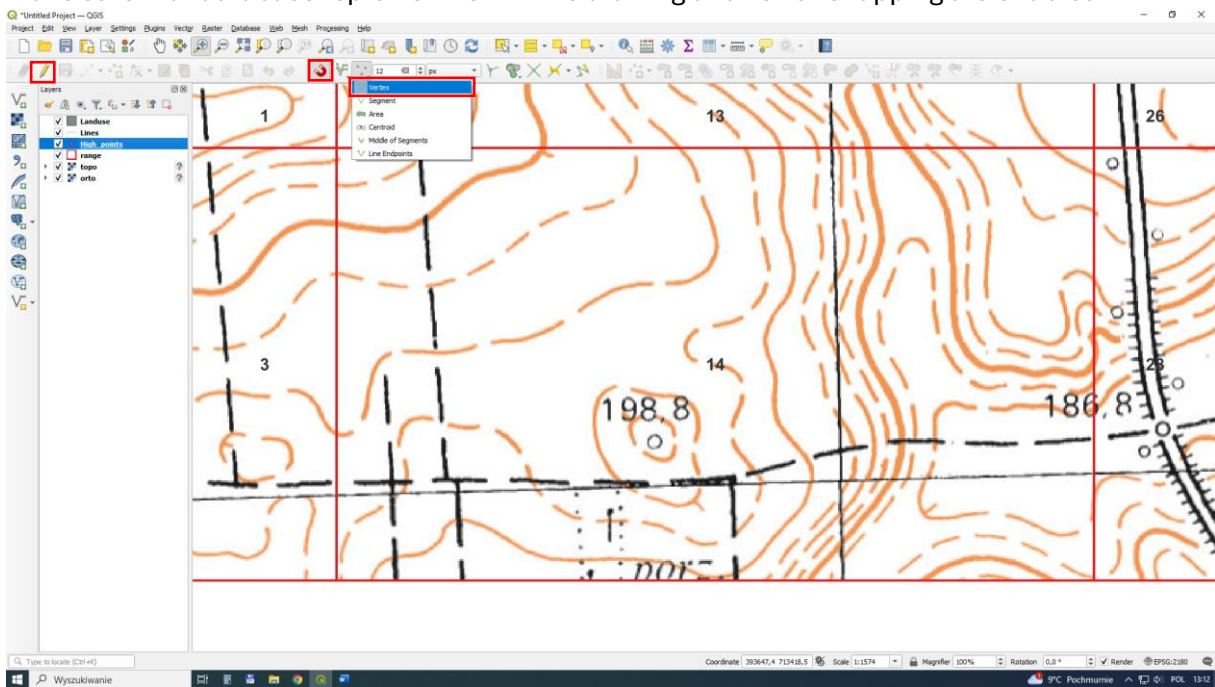


## Make sure that database replenishment is enabled while drawing





Make sure that database replenishment while drawing and vertex snapping are enabled



When drawing adjacent polygons, enable polygon overlap cancellation

